

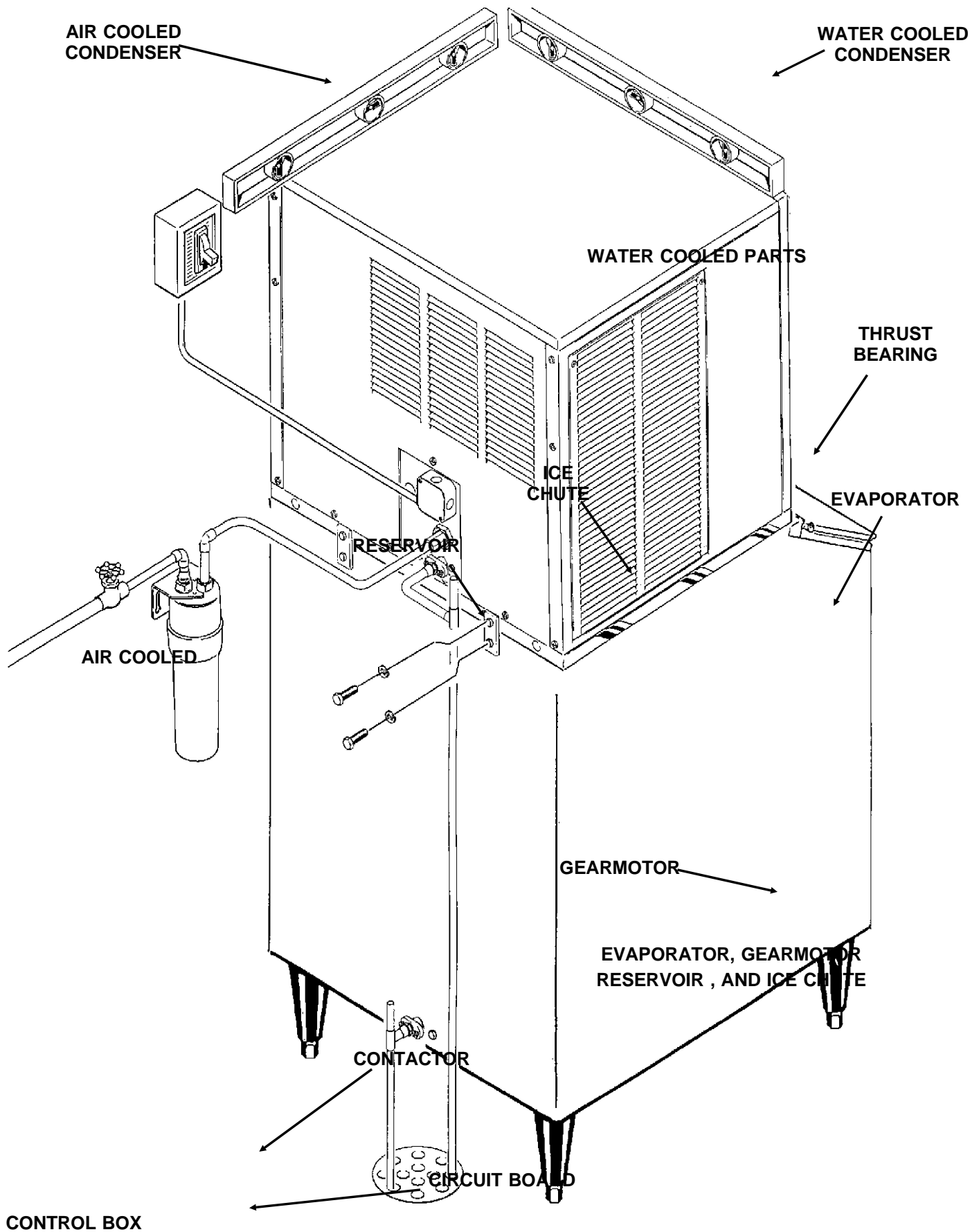
FM1500 SERVICE PARTS

This parts list contains the service parts and wiring diagrams for this model. Check the model number of the machine needing the parts to be certain that this is the correct parts list.

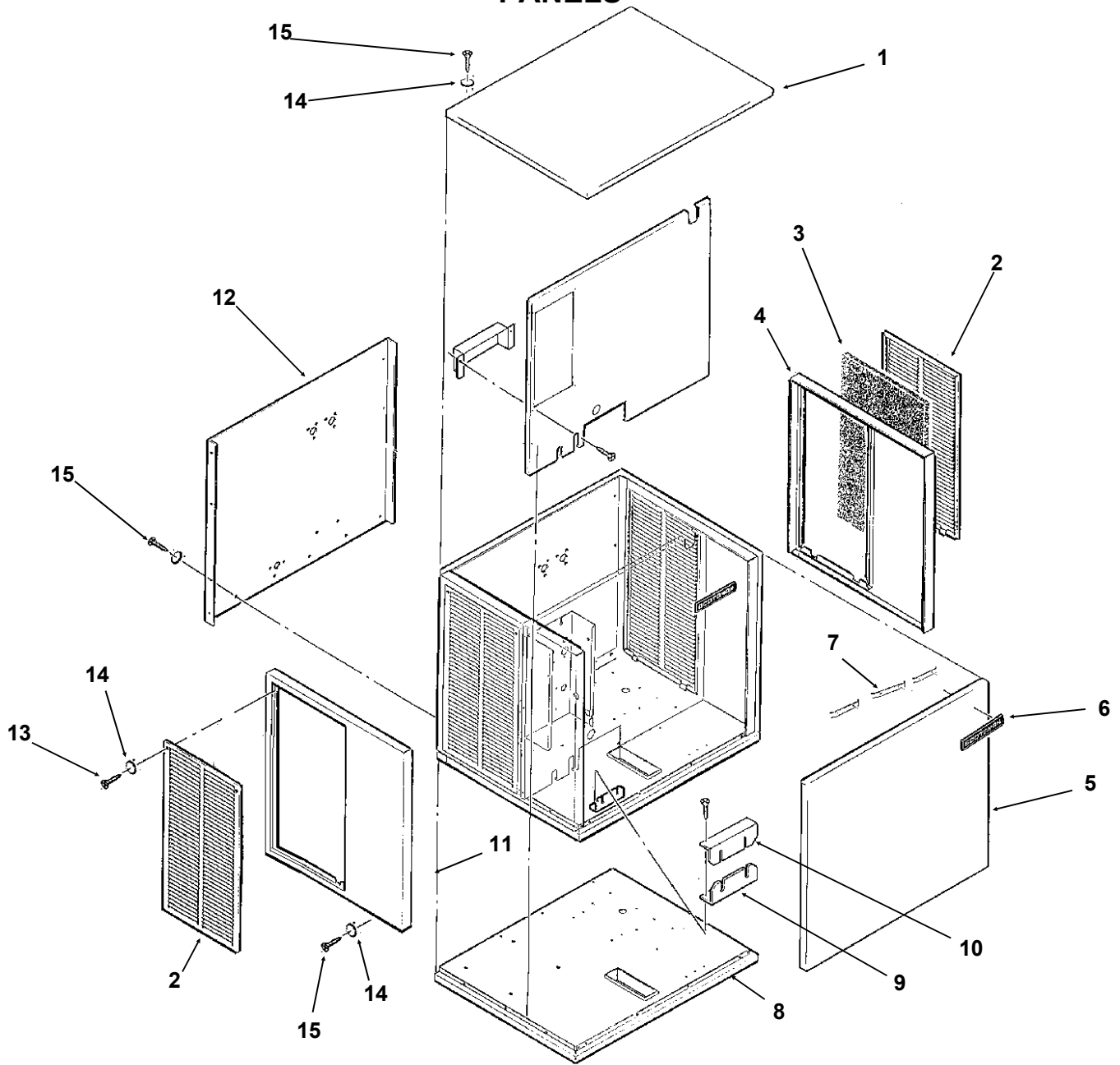
TABLE OF CONTENTS

| | |
|---------------------------------|--------|
| Cabinet and Panels | Page 2 |
| Air Cooled Refrigeration | Page 3 |
| Water Cooled Refrigeration..... | Page 4 |
| Evaporator | Page 5 |
| Control Box..... | Page 6 |
| Gearmotor..... | Page 7 |
| Reservoir, Ice Chute..... | Page 8 |
| Wiring Diagrams | Page 9 |

FM1500 SERVICE PARTS

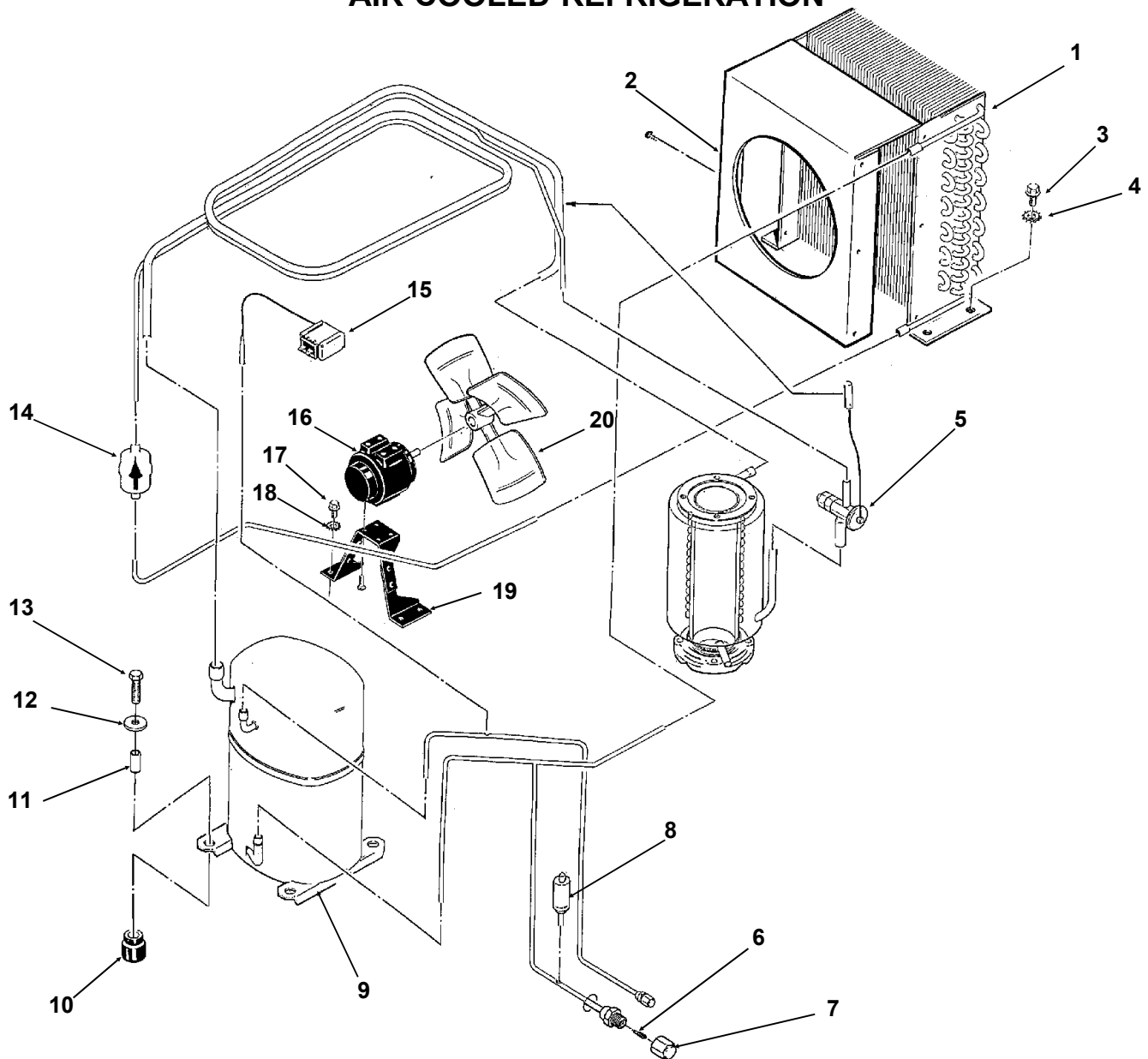


FM1500 SERVICE PARTS PANELS



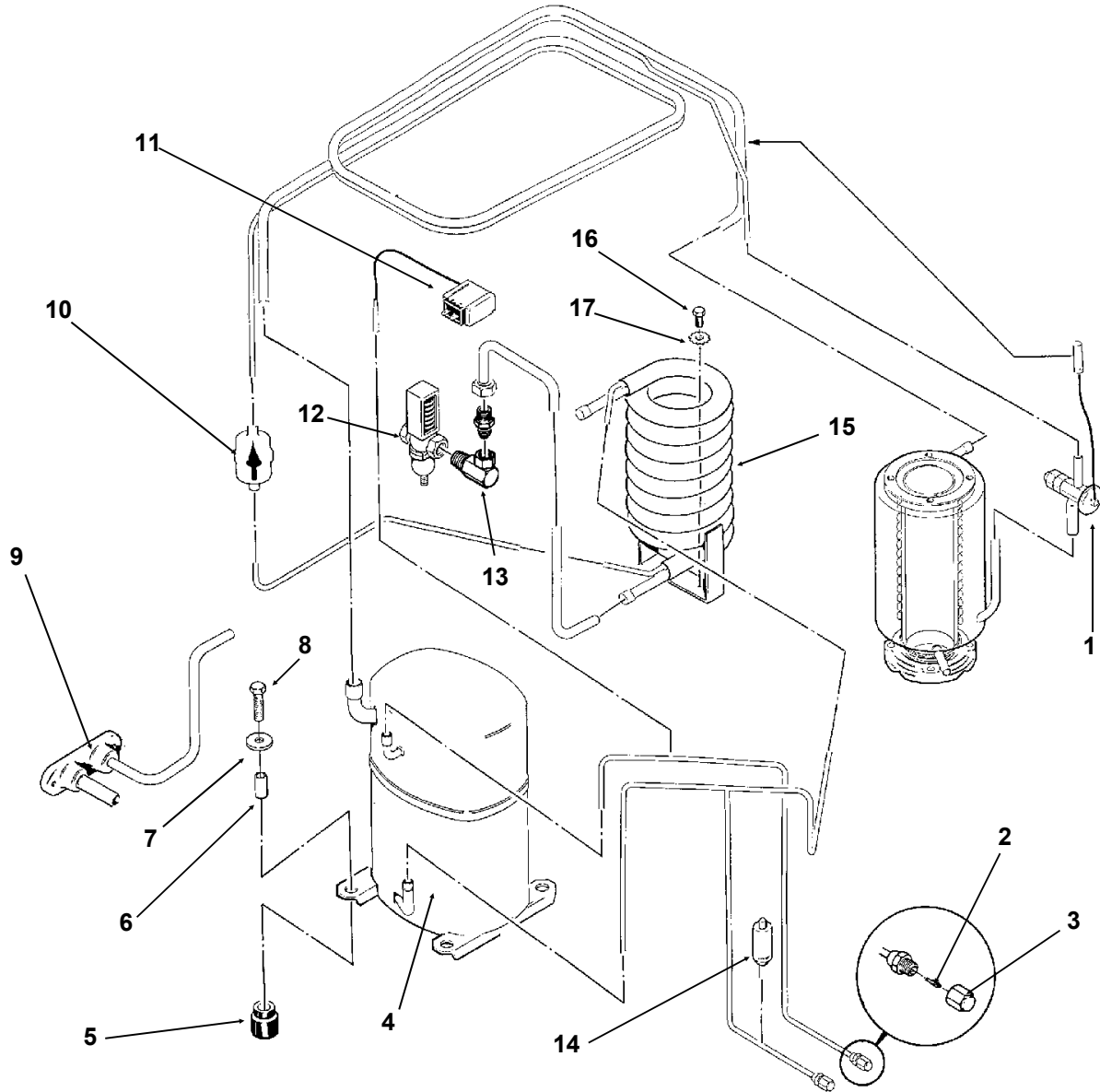
| ITEM NUMBER | PART NUMBER | DESCRIPTION | ITEM NUMBER | PART NUMBER | DESCRIPTION |
|-------------|-------------|----------------------|-------------|-------------|---------------------|
| 1. | A32159-001 | Top Panel Painted | 8. | A32542-001 | Base Assembly |
| | A32159-002 | Top Panel Stainless | 9. | A31462-001 | Tube Bracket |
| 2. | A32161-001 | Service Panel Paint | 10. | A31461-001 | Tube Bracket |
| | A32161-002 | Service Panel S.S. | 11. | A32163-001 | Left End Panel Pt. |
| 3. | A32975-001 | Filter | | A32163-002 | Left End Panel S.S. |
| 4. | A32162-001 | Right End Panel Pt. | 12. | A32202-003 | Back Panel |
| | A32162-002 | Right End Panel S.S. | 13. | 03-1404-12 | Screw |
| 5. | A32160-001 | Front Panel Painted | 14. | 03-1417-03 | Washer |
| | A32160-002 | Front Panel S.S. | 15. | 03-1531-01 | Screw |
| 6. | 15-0711-01 | Emblem | | | |
| 7. | 03-0271-00 | Clip For Emblem (3) | | | |

FM1500 SERVICE PARTS AIR COOLED REFRIGERATION



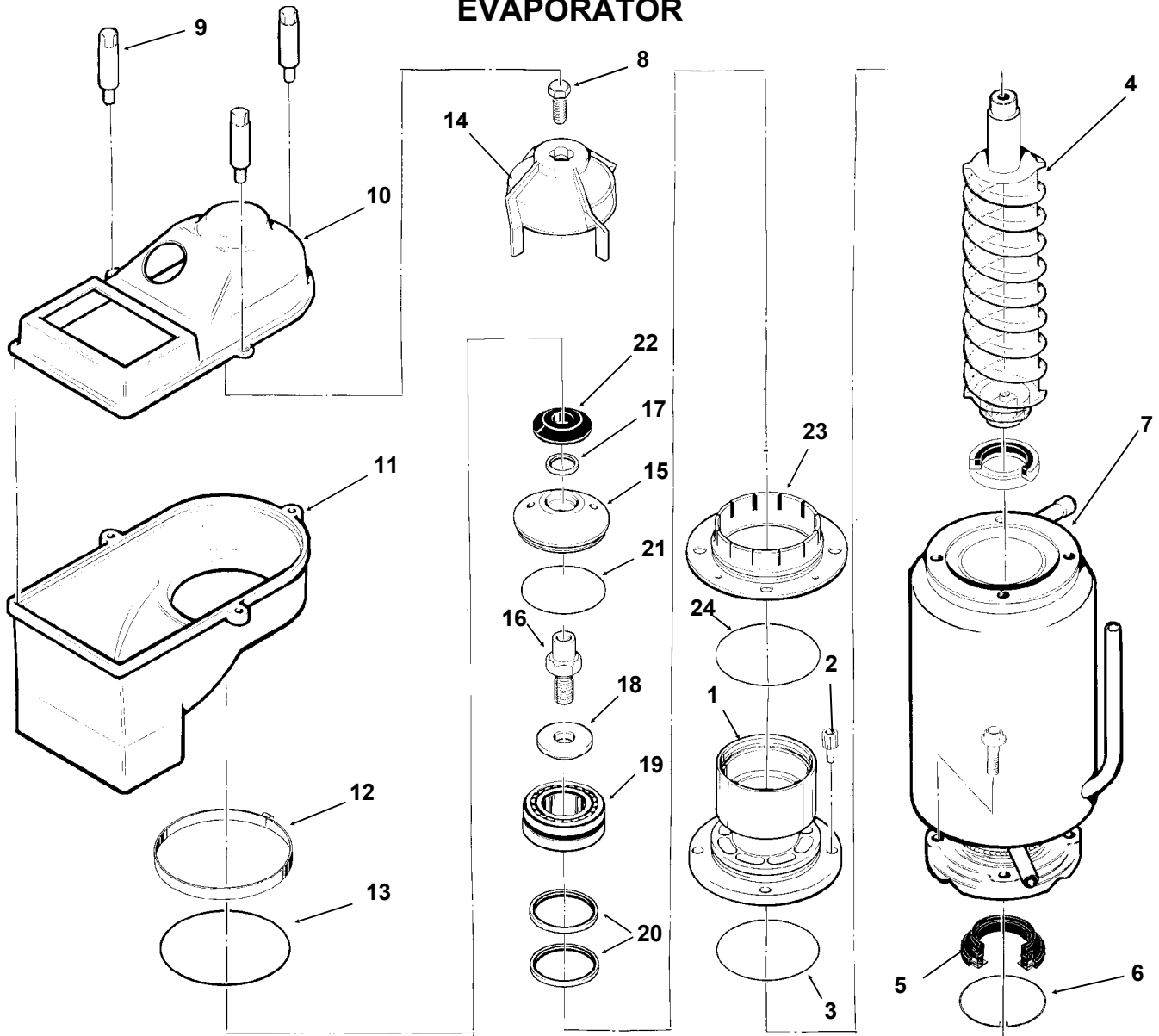
| ITEM NUMBER | PART NUMBER | DESCRIPTION | ITEM NUMBER | PART NUMBER | DESCRIPTION |
|-------------|-------------|----------------------------|-------------|-------------|-------------------|
| 1. | 18-3709-01 | Air Cooled Condens. | 10. | 18-6800-01 | Grommet |
| 2. | A32170-001 | Shroud | 11. | 18-2300-26 | Sleeve |
| 3. | 03-1645-01 | Bolt | 12. | 03-1407-07 | Washer |
| 4. | 03-1417-09 | Washer | 13. | 03-1405-20 | Bolt |
| 5. | 16-0780-21 | Expansion Valve | 14. | 02-3319-02 | Drier |
| 6. | 16-0560-00 | Valve Core | 15. | 11-0447-20 | L. P. Control |
| 7. | 16-0563-00 | Valve Cap | 16. | 18-5105-02 | Fan Motor |
| 8. | 11-0446-21 | Pressure Control | 17. | 03-1404-03 | Screw |
| 9. | 18-5900-02 | Compressor 208-230/60/1 | 18. | 03-1417-09 | Washer |
| | 18-5900-03 | Compressor 208-230/60/3 | 19. | 18-3739-0-1 | Fan Motor Bracket |
| | | | 20. | 18-3732-01 | Fan Blade |

FM1500 SERVICE PARTS WATER COOLED REFRIGERATION



| ITEM NUMBER | PART NUMBER | DESCRIPTION | ITEM NUMBER | PART NUMBER | DESCRIPTION |
|-------------|-------------|----------------------------|-------------|-------------|---------------------------|
| 1. | 16-0780-21 | Expansion Valve | 8. | 03-1405-20 | Bolt |
| 2. | 16-0560-00 | Valve Core | 9. | A31878-004 | Drain |
| 3. | 16-0563-00 | Valve Cap | 10. | 02-3319-02 | Drier |
| 4. | 18-5900-03 | Compressor 208-230/60/3 | 11. | 11-0447-20 | Lo Press. Control |
| | 18-5900-02 | Compressor 208-230/60/1 | 12. | 11-0424-01 | Water Reg. Valve |
| 5. | 18-6800-01 | Grommet | 13. | 16-0401-02 | Elbow |
| 6. | 18-2300-26 | Sleeve | 14. | 11-0446-21 | Pressure Control |
| 7. | 03-1407-07 | Washer | 15. | 18-6900-25 | Water Cooled Condenser |
| | | | 16. | 03-1645-01 | Screw |
| | | | 17. | 03-1417-09 | Washer |

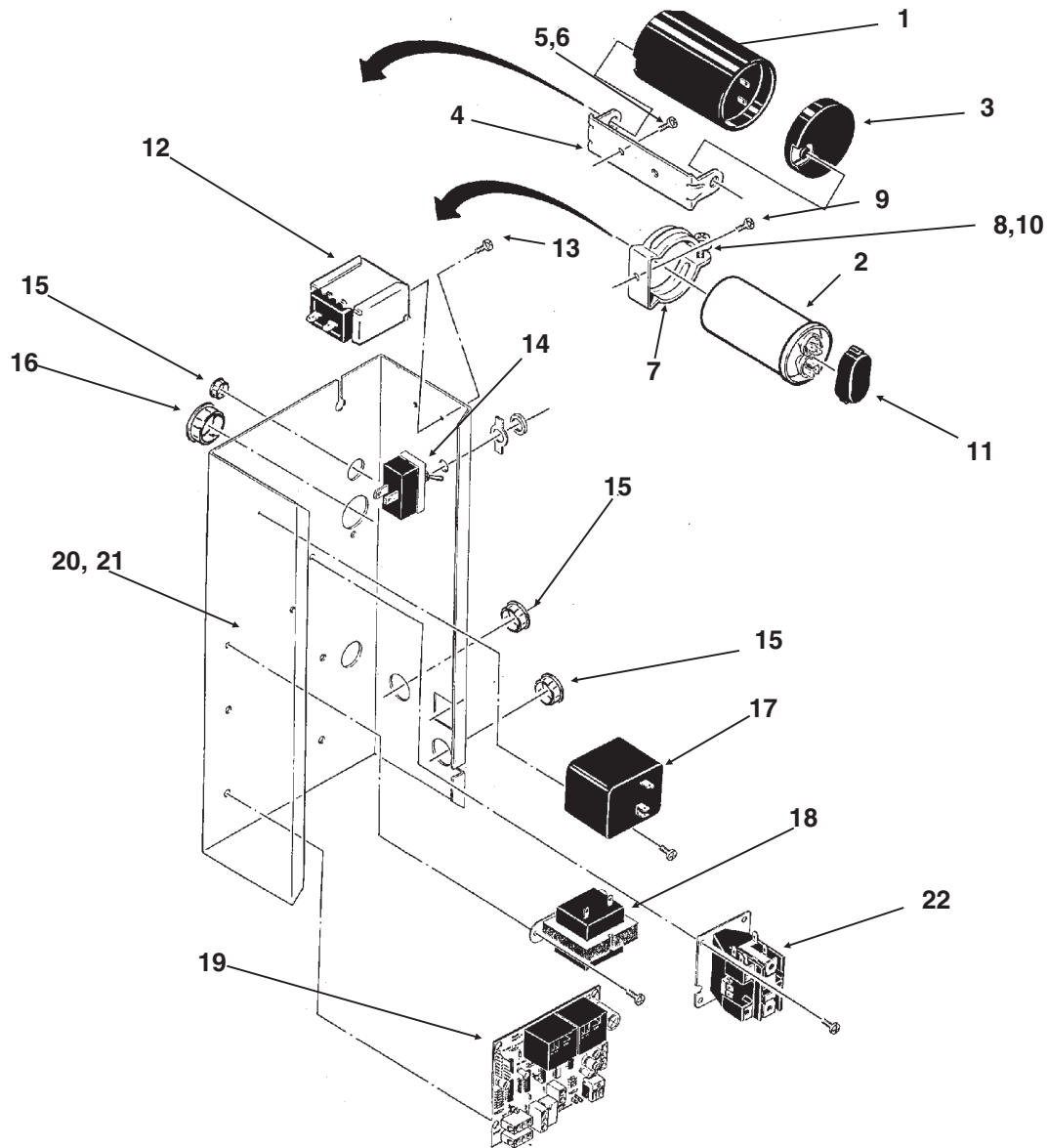
FM1500 SERVICE PARTS EVAPORATOR



| ITEM NUMBER | PART NUMBER | DESCRIPTION | ITEM NUMBER | PART NUMBER | DESCRIPTION |
|-------------|-------------|--------------------------------|-------------|-----------------|----------------|
| 1. | A34505-020 | Divider Includes Items 19 & 20 | 11. | 02-2926-01 | Ice Chute Body |
| 2. | 03-1544-08 | Soc. head Screw | 12. | A32905-001 | Clamp |
| 3. | 13-0617-45 | O-ring | 13. | 13-0617-52 | O-ring |
| 4. | A38071-022 | Auger | 14. | 02-3001-01 | Ice Sweep |
| 5. | 02-0929-03 | Water Seal | 15. | 02-3128-20 | Breaker Cover |
| 6. | A32777-001 | Ring, Water Seal | 16. | 08-0660-01 | Auger Stud |
| 7. | A32890-020 | Evaporator | 17. | 02-2978-01 | Lip Seal |
| 8. | 03-1405-52 | Hex Cap Screw | 18. | part of item 16 | Thrust Washer |
| 9. | 02-2933-01 | Hex stud | 19. | A34559-020 | Bearing |
| 10. | 02-2930-01 | Ice Chute Cover | 20. | 02-2977-01 | Lip Seal |
| | | | 21. | 13-0617-54 | O-Ring |
| | | | 22. | 13-0871-01 | Water Shed |
| | | | 23. | 02-2916-01 | Slotted Collar |
| | | | 24. | 13-0617-49 | O-Ring |

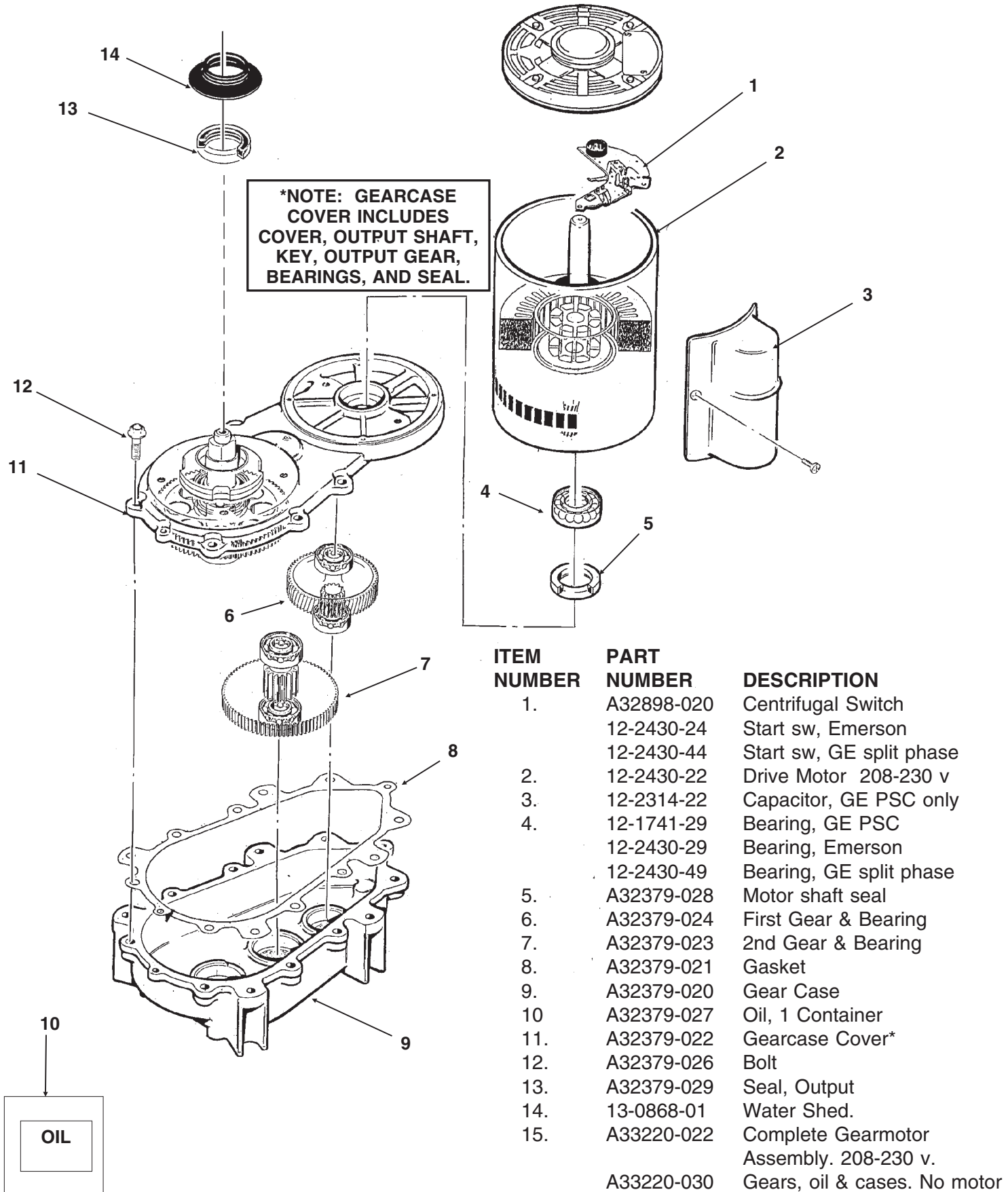
Note: Evaporator is not available with internal parts. The auger and water seal must be ordered separately.

FM1500 SERVICE PARTS CONTROL BOX



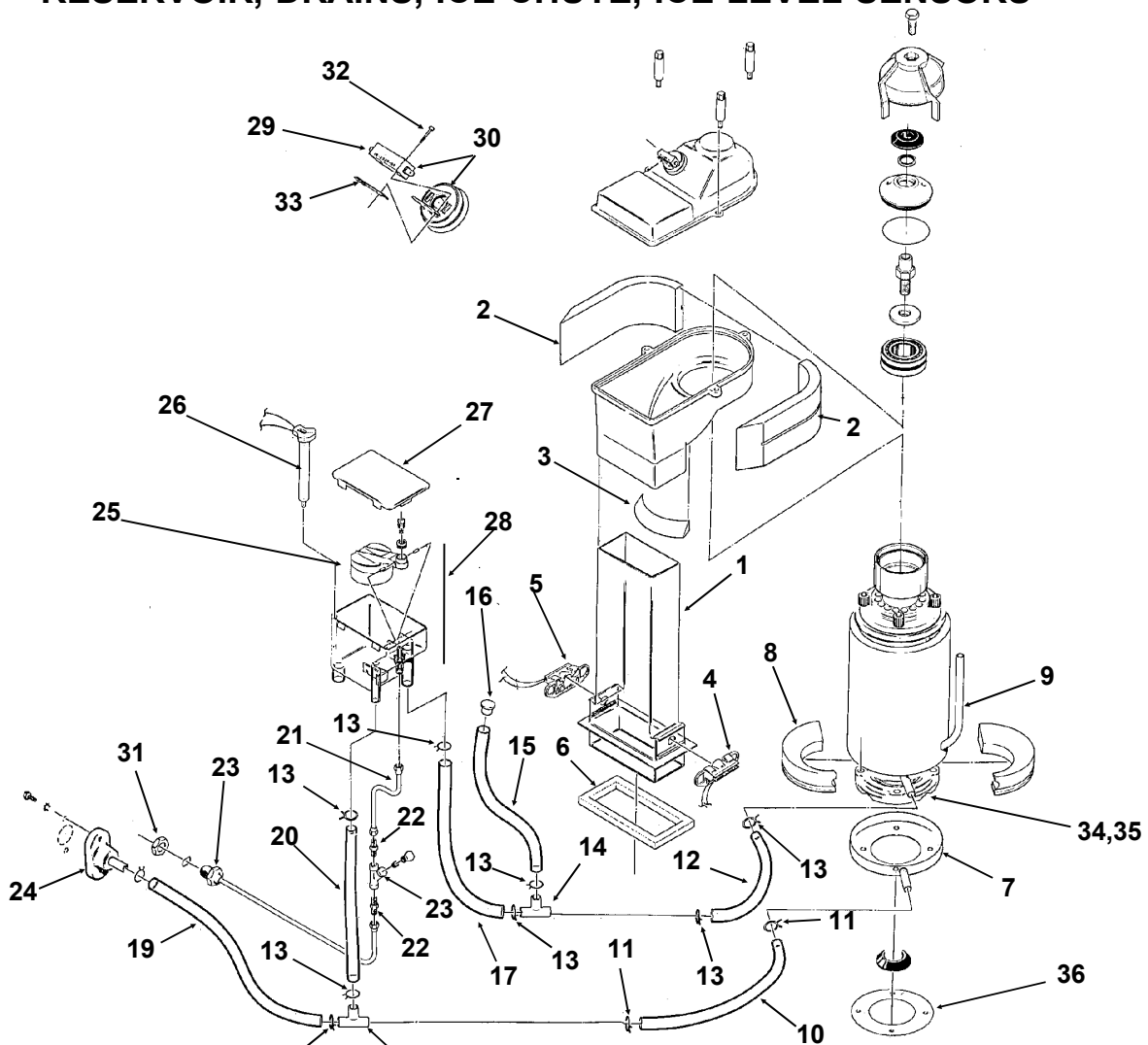
| ITEM NUMBER | PART NUMBER | DESCRIPTION | ITEM NUMBER | PART NUMBER | DESCRIPTION |
|-------------|-------------|---------------------|------------------|-------------|--|
| 1. | 18-1901-48 | Start Capacitor | 15. | 12-1213-10 | Snap Bushing |
| 2. | 18-1902-53 | Run Capacitor | 16. | 12-1213-11 | Snap Bushing |
| 3. | 18-4300-50 | Start Capacitor Cap | 17. | 18-1903-46 | Relay |
| 4. | 18-2200-39 | Start Cap. Bracket | 18. | 12-2285-22 | Transformer |
| 5. | 03-1638-04 | Screw | 19. | A37750-021 | Circuit Board |
| 6. | 03-1417-15 | Lockwasher | 20. | No Number | Control Box |
| 7. | A32872-001 | Run Cap. Bracket | 21. | A32896-001 | Cont. Box Cover |
| 8. | 03-1652-02 | Bolt | 22. | 12-2469-02 | 1 Phase Contactor |
| 9. | 03-1638-03 | Screw | | 12-0739-02 | 3 Phase Contactor |
| 10. | 03-0255-04 | Wing Nut | NOT ILLUSTRATED: | | |
| 11. | 13-0666-00 | Terminal Cover | 23. | 12-2337-02 | 3 Pin Plug Assy (safety circuit to circuit board) |
| 12. | 11-0447-20 | Low Press. Control | 24. | 12-2340-01 | 4 Pin Plug Assy (transformer to circuit board) |
| 13. | 03-1403-02 | Screw | | | |
| 14. | 12-0426-01 | Master Switch | | | |

FM1500 SERVICE PARTS GEARMOTOR



FM1500 SERVICE PARTS

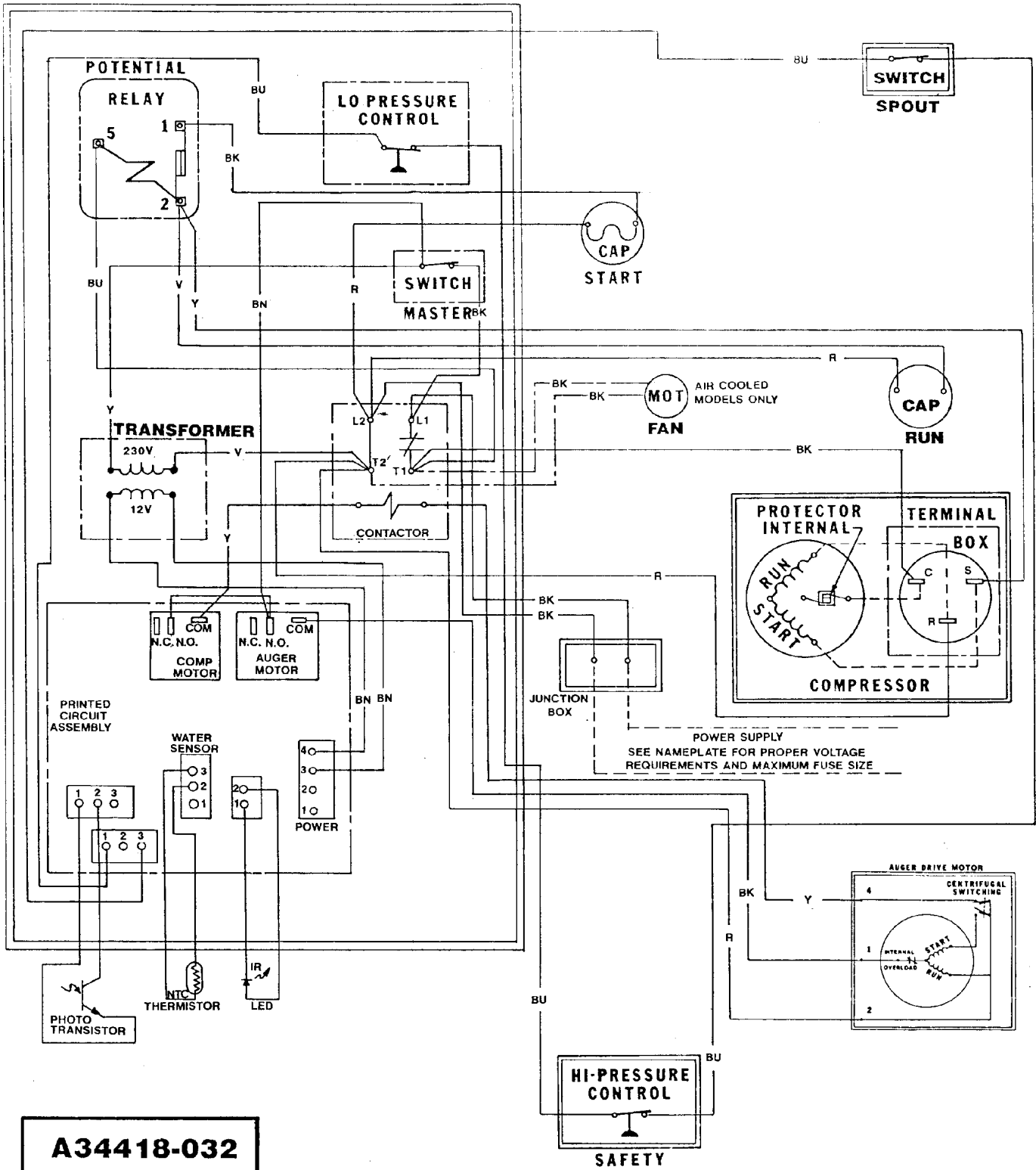
RESERVOIR, DRAINS, ICE CHUTE, ICE LEVEL SENSORS



| ITEM NUMBER | PART NUMBER | DESCRIPTION | ITEM NUMBER | PART NUMBER | DESCRIPTION |
|-------------|-------------|--|-------------|-------------|--|
| 1. | 02-2929-01 | Ice Chute Lower | 19. | 13-0079-03 | Tube, 18" Order By Ft. |
| 2. | A32963-001 | Insulation Collar Top | 20. | 13-0079-03 | Tube, 11" Order By Ft. |
| 3. | A33102-001 | Insulation Collar Inside | 21. | A32748-001 | Tube |
| 4. | A35419-020 | Strap kit | 22. | 16-0791-01 | Coupling Union |
| | A37708-021 | LED & Phototransistor Assy. (set - includes item 5) | 23. | A32878-001 | Inlet Water Tube |
| 5. | no number | same as item 4. | 24. | A32282-004 | Drain - Air Cooled |
| 6. | A32930-001 | Chute Gasket | | A31878-004 | Drain - Water Cooled |
| 7. | A32050-001 | Drip Pan | 25. | A32922-020 | Float Assy With Pin, Housing Seal, Rubber Seal, Insert & Float. |
| 8. | A32962-001 | Insulation Collar Bottom | 26. | A33101-021 | Thermo Probe |
| 9. | A32962-002 | Insulation Collar Bottom | 27. | 02-2936-01 | Reservoir Cover |
| 10. | 13-0079-03 | Hose 3.3" Order By Ft. | 28. | A32929-020 | Float And Reservoir Complete |
| 11. | 02-0538-00 | Hose Clamp | 29. | 12-2329-01 | Switch |
| 12. | A33203-001 | Preformed Hose | 30. | A32891-020 | Switch Housing W/Switch |
| 13. | 02-2814-08 | Hose Clamp | 31. | 03-1394-01 | Pal Nut |
| 14. | 16-0670-01 | Tee | 32. | 03-1403-09 | Screw |
| 15. | 13-0674-06 | Tube, 14" Order By Ft. | 33. | 03-0886-00 | Speed Nut |
| 16. | A33205-001 | Plug | 34. | 03-1420-03 | Stud, Evap to GM |
| 17. | 13-0674-06 | Tube, 9" Order By Ft. | 35. | 03-1417-13 | Lock washer |
| 18. | 16-0670-02 | Tee | 36. | 13-0704-00 | Drip pan gasket |

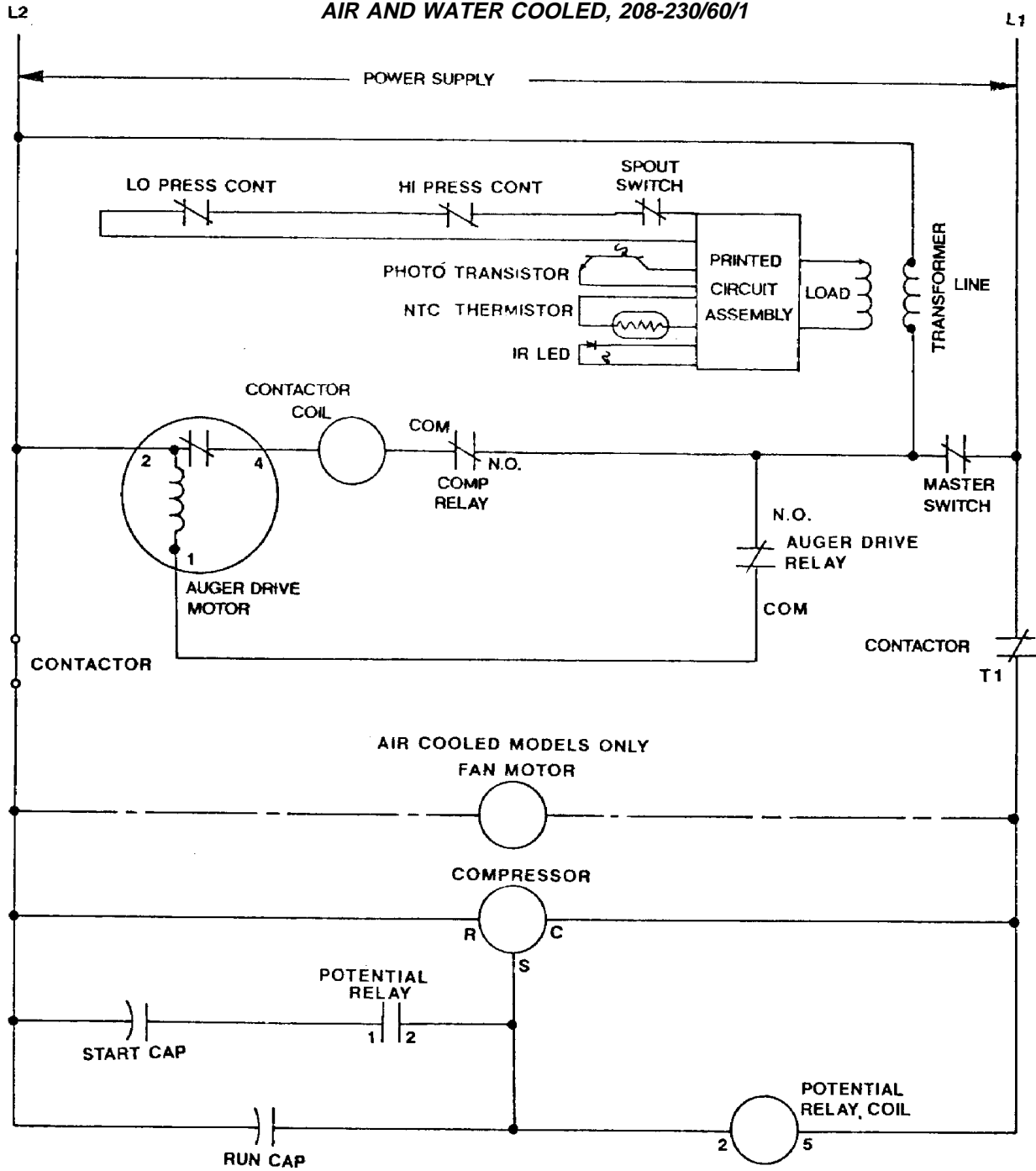
FM1500 SERVICE PARTS

AIR AND WATER COOLED, 208-230/60/1



FM1500 SERVICE PARTS

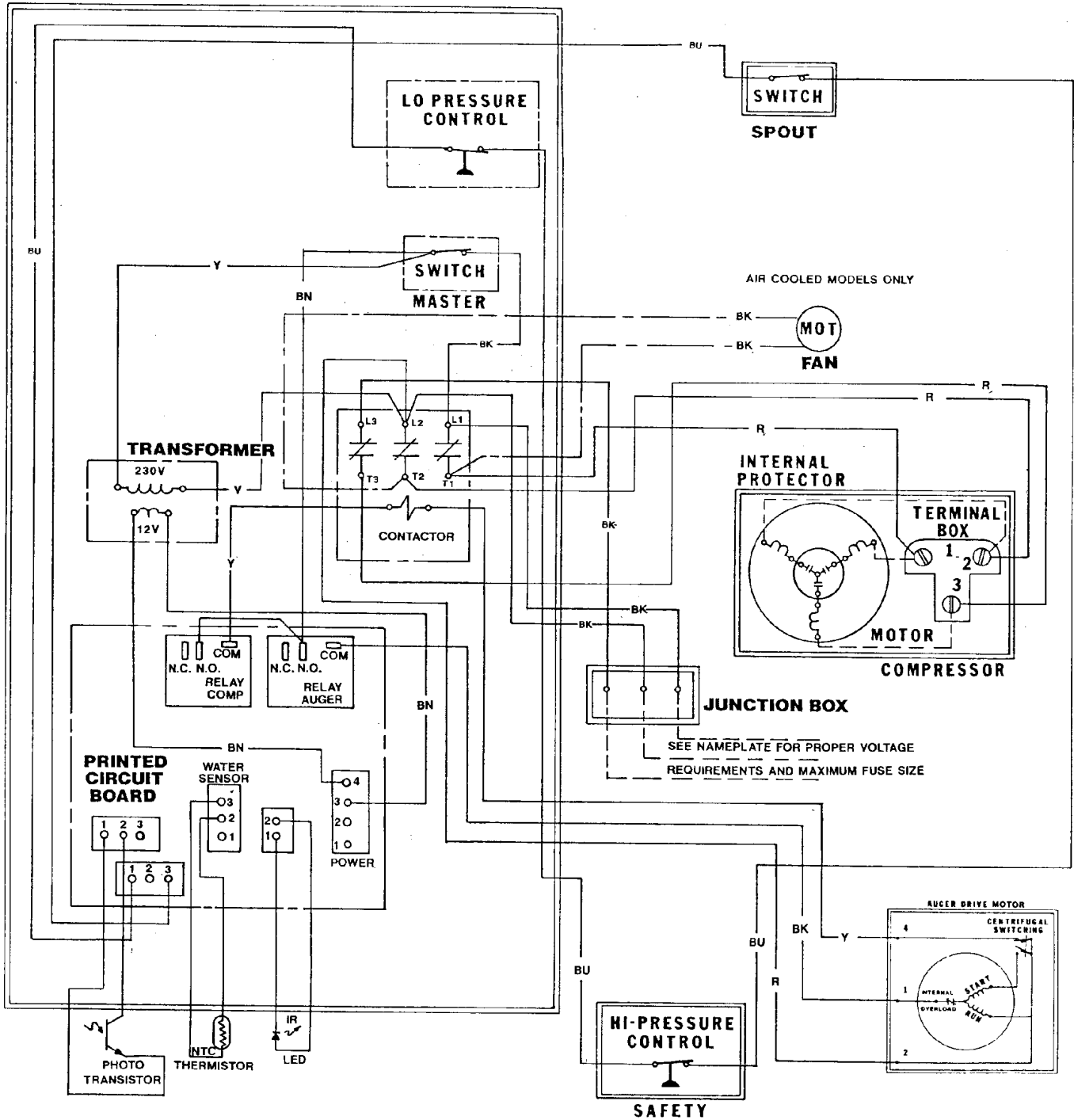
AIR AND WATER COOLED, 208-230/60/1



USE COPPER CONDUCTORS ONLY
ALL CONTROLS SHOWN IN NORMAL ICEMAKING MODE
THIS UNIT MUST BE GROUNDED

FM1500 SERVICE PARTS

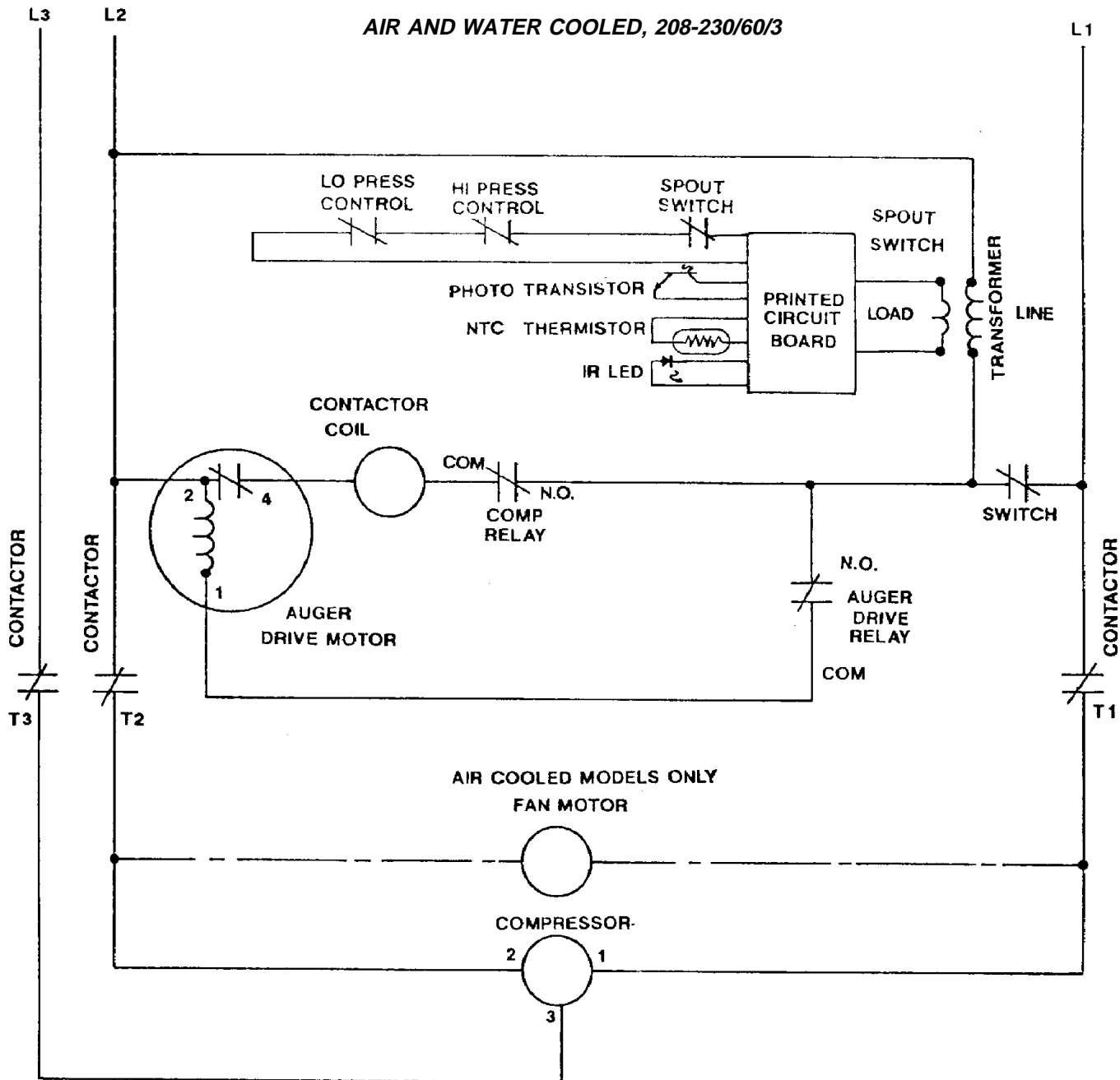
AIR AND WATER COOLED, 208-230/60/3



A34418-003

FM1500 SERVICE PARTS

AIR AND WATER COOLED, 208-230/60/3



**USE COPPER CONDUCTORS ONLY
ALL CONTROLS SHOWN IN NORMAL ICEMAKING MODE
THIS UNIT MUST BE GROUNDED**